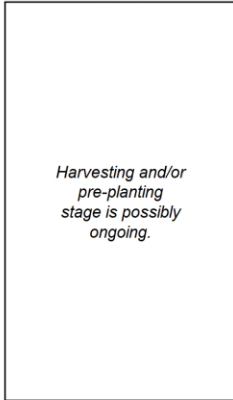
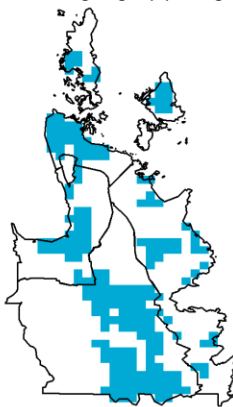


# Region XIII (Caraga)

Water Availability for Rice  
Prevailing Stage : None



Water Availability for Corn  
Prevailing Stage : (III) Silking



## Provincial Values Regional Summary

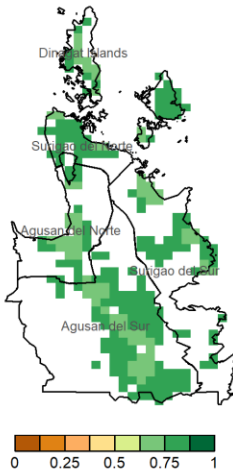
	Mon. Ave. Rainfall (mm)	Rice		Corn	
		CS	RS (%)	CS	RS (%)
Surigao del Sur	369.06	I	282.1	I	477.0
		II	263.6	II	375.3
		III	255.2	III	318.7
		IV	255.2	IV	372.4
Surigao del Norte	374.45	I	247.7	I	375.9
		II	232.3	II	293.9
		III	225.3	III	246.7
		IV	225.3	IV	291.4
Dinagat Islands	498.23	I	463.8	I	663.1
		II	434.5	II	523.4
		III	421.3	III	441.9
		IV	421.3	IV	519.2
Agusan del Sur	395.58	I	298.9	I	489.4
		II	279.6	II	373.0
		III	270.9	III	309.6
		IV	270.9	IV	369.7
Agusan del Norte	378.68	I	217.5	I	364.0
		II	200.9	II	263.3
		III	193.5	III	211.6
		IV	193.5	IV	260.5

The whole CARAGA region has an excessive accumulation of rainfall both for rice and corn crops which significantly can be attributed to the ITCZ, TS Agaton and LPA influence. Noticeable with the RX5day index, the Dinagat Islands, Agusan del Sur and some parts of Surigao del Sur received consecutive days of heavy rains. This excessiveness possibly caused flooding and soil erosion which may lead to the disruption of any planting activity and may have inflicted damage on the crops especially corns in the prevailing Silking stage.

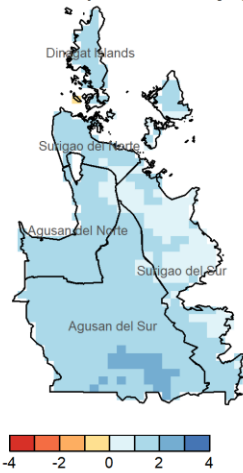
Moreover, the SPEI3 shows that CARAGA generally received slightly above- to above-normal rainfall for the past three months. Healthy vegetations are indicated by the NDVI, but could only hold true if the crops were not damaged by the heavy rainfall events.

Legend :  
■ Inadequate  
■ Sufficient  
■ Excess

NDVI



SPEI3 (Feb-Mar-Apr)



RX1day



RX5day

